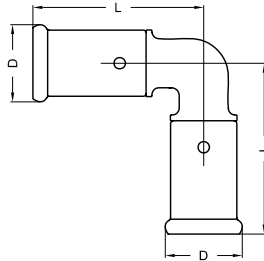


10 PRODUCT RANGE

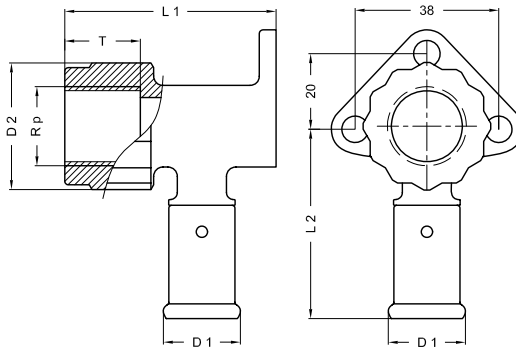
10.2.2 PVDF press fittings for gas

TYPE: 1PKG Elbow 90°



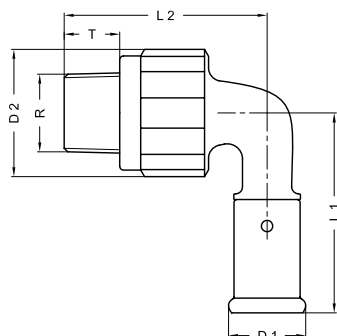
ART. NO.	L mm	D mm
1PKG-1616	46	22
1PKG-2020	49	26
1PKG-2626	54	32
1PKG-3232	72	39

TYPE: 2PKG Backplate elbow female, short model



ART. NO.	L1 mm	L2 mm	D1 mm	D2 mm	Rp	T mm
2PKG-1604	56	52	22	33	1/2"	13,5
2PKG-2004	56	52	26	33	1/2"	13,5
2PKG-2005	61	58	26	40	3/4"	15,5
2PKG-2605	66	58	32	40	3/4"	15,5

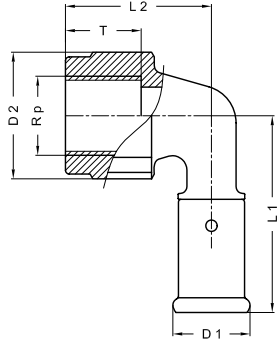
TYPE: 5PKG Bent male iron adaptor 90°



ART. NO.	L1 mm	L2 mm	D1 mm	D2 mm	R	T mm
5PKG-1604	54	54	22	33	1/2"	13,5
5PKG-2004	56	56	26	33	1/2"	13,5
5PKG-2005	58	58	26	40	3/4"	14,5
5PKG-2605	60	62	32	40	3/4"	14,5
5PKG-3206	75	68,5	39	45,5	1"	16,5

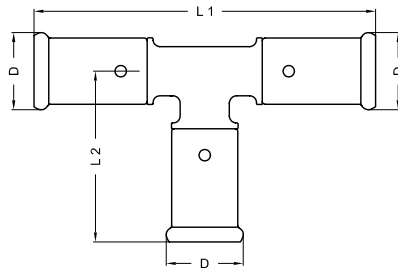


TYPE: 6PKG Bent female iron adaptor 90°



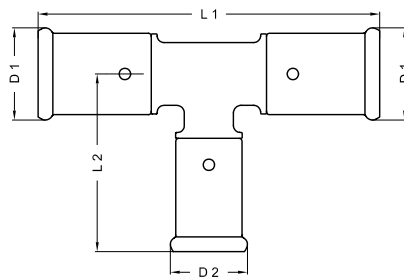
ART. NO.	L1	L2	D1	D2	Rp	T
	mm	mm	mm	mm		mm
6PKG-1604	53	53	22	33	1/2"	13,5
6PKG-2004	53	39	26	33	1/2"	13,5
6PKG-2005	60	47,5	26	40	3/4"	15,5
6PKG-2605	60	47,5	32	40	3/4"	15,5
6PKG-3206	75	58,5	39	45,5	1"	18

TYPE: 9PKG Equal Tee



ART. NO.	L1	L2	D
	mm	mm	mm
9PKG-161616	94	47	22
9PKG-202020	98	49	26
9PKG-262626	107	53	32
9PKG-323232	170	70	39

TYPE: 10PKG T-reduced centre

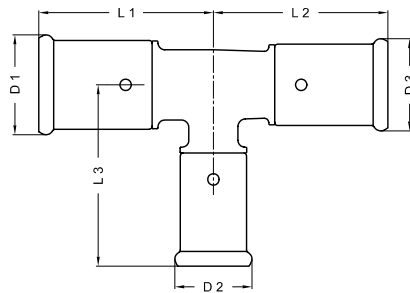


ART. NO.	L1	L2	D1	D2
	mm	mm	mm	mm
10PKG-201620	47	47	26	22
10PKG-261626	49	49	32	22
10PKG-262026	51,5	51,5	32	26
10PKG-321632	133	58	39	22
10PKG-302032	133	58	39	26
10PKG-322632	133	58	39	32

- 1
- 2
- 3
- 4
- 5
- 6
- 7
- 8
- 9
- 10
- 11
- 12
- 13

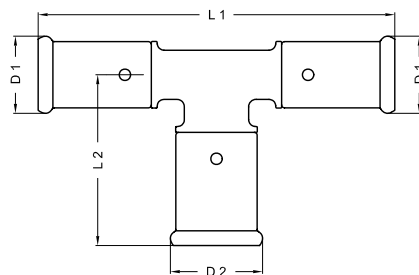
10 PRODUCT RANGE

TYPE: 11PKG T-branch and line reduced (*3 x reduced)



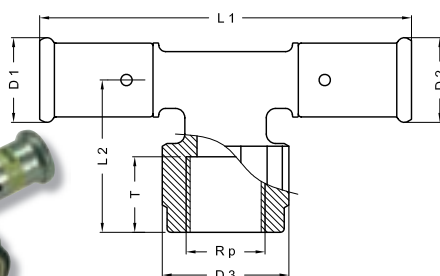
ART. NO.	L1 mm	L2 mm	L3 mm	D1 mm	D2 mm	D3 mm
11PKG-201616	47,5	49,5	49,5	26	22	22
11PKG-202016	49,5	51	49,5	26	26	22
11PKG-261620*	51,8	51,8	53,5	32	22	26
11PKG-262016*	51,5	51,5	53,2	32	26	22
11PKG-262020	51,8	51,8	54	32	26	26
11PKG-262616	53,5	56	53,5	32	32	22
11PKG-262620	53,5	54,5	53,2	32	32	26
11PKG-322026*	66,8	60	58,5	39	26	32
11PKG-322626	66,3	60	58,5	39	32	32

TYPE: 12PKG T-enlarged branch



ART. NO.	L1 mm	L2 mm	D1 mm	D2 mm
12PKG-162016	101	48,5	22	26
12PKG-202620	108	52	26	32
12PKG-263226	114	66	32	39

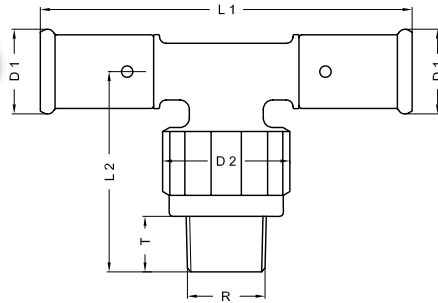
TYPE: 13PKG T-female iron branch



ART. NO.	L1 mm	L2 mm	D1 mm	D2 mm	D3 mm	Rp	T mm
13PKG-160416	109	39	22	22	33	1/2"	13,5
13PKG-200420	109	39	26	26	33	1/2"	13,5
13PKG-200520	119	47	26	26	40	3/4"	15,5
13PKG-260420	109	43	32	26	33	1/2"	13,5
13PKG-260426	109	43	32	32	33	1/2"	13,5
13PKG-260526	119	47	32	32	40	3/4"	15,5
13PKG-320532	146	52,5	39	39	40	3/4"	15,5
13PKG-320632	149	56	39	39	45,5	1"	18
13PKG-320732	161	66	39	39	56,5	5/4"	21

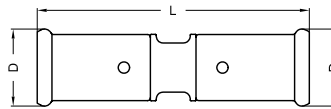


TYPE: 14PKG T-male iron branch



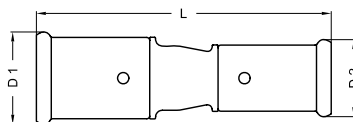
ART. NO.	L1 mm	L2 mm	D1 mm	D2 mm	R	T mm
14PKG-160416	109	54	22	33	1/2"	13,5
14PKG-200420	109	54	26	33	1/2"	13,5
14PKG-200520	114	58	26	40	3/4"	14,5
14PKG-260426	119	60	32	33	1/2"	13,5
14PKG-260526	119	63	32	40	3/4"	14,5
14PKG-260626	124	65	32	45,5	1"	16,5
14PKG-320532	146	66	39	40	3/4"	14,5

TYPE: 15PKG Equal coupling



ART. NO.	L mm	D mm
15PKG-1616	74	22
15PKG-2020	76	26
15PKG-2626	81	32
15PKG-3232	103	39

TYPE: 16PKG Reducing coupling



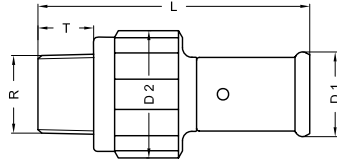
ART. NO.	L mm	D1 mm	D2 mm
16PKG-2016	80,8	26	22
16PKG-2616	84	32	22
16PKG-2620	84	32	26
16PKG-3216	107	39	22
16PKG-3220	103	39	26
16PKG-3226	102	39	32

- 1
- 2
- 3
- 4
- 5
- 6
- 7
- 8
- 9
- 10
- 11
- 12
- 13

10 PRODUCT RANGE

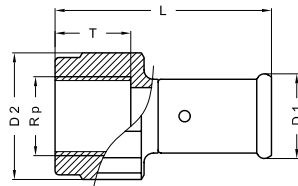
- 1
- 2
- 3
- 4
- 5
- 6
- 7
- 8
- 9
- 10**
- 11
- 12
- 13

TYPE: 17PKG Straight male iron adapter



ART. NO.	L mm	D1 mm	D2 mm	R	T mm
17PKG-1604	75	22	33	1/2"	13,5
17PKG-2004	75	26	33	1/2"	13,5
17PKG-2005	77	26	40	3/4"	14,5
17PKG-2605	77	32	40	3/4"	14,5
17PKG-2606	80	32	45,5	1"	16,5
17PKG-3206	91	39	45,5	1"	16,5
17PKG-3207	99	39	56,5	5/4"	19

TYPE: 18PKG Straight female iron adapter



ART. NO.	L mm	D1 mm	D2 mm	Rp	T mm
18PKG-1604	59,5	22	33	1/2"	13,5
18PKG-2004	59,5	26	33	1/2"	13,5
18PKG-2005	63	26	40	3/4"	15,5
18PKG-2605	63	32	40	3/4"	15,5
18PKG-2606	70,5	32	45,5	1"	18
18PKG-3206	82	39	45,5	1"	18
18PKG-3207	90	39	56,5	5/4"	21