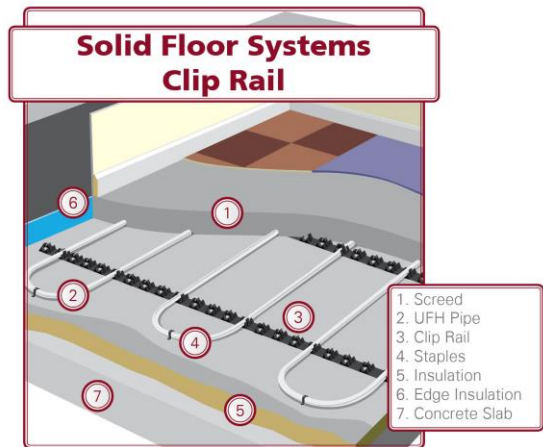


# MULTIPIPE Screed-Rail® System

## Features;

- Self-adhesive 1m lengths clip rail with pipe clips at 50mm intervals and space for additional clipping direct to the insulation board.
- As part of our quotation package we will allow for a perimeter strip which stops thermal bridging from the walls, also taking up a majority of the expansion of the floor.
- Polythene membrane (500 gauge) is supplied to stop the screed seeping under the insulation board causing them to float.



## Benefits;

- Cost competitive screed system adding ease of installation.
- Allows for easy avoidance of objects on underfloor heating line i.e. pillars, floor sockets etc.
- High thermal mass classification, this is the most efficient of underfloor systems running at only 45oC normally or with closer centres as low as 35oC-40oC.
- The screed stores the energy so one heat this will radiate for hours.
- The **MULTIPIPE** Screed-Rail® system for easier fitting of a highly efficient and cost effective screed system.
- The Screed-Rail® System enables a possible output of 100w/m<sup>2</sup> on boilers and 70-80w/m<sup>2</sup> on heat pumps in a retro-fit installation.
- Screed-Rail® enables the designer/installer to vary the pipe centres as required. Pipe can be installed at 200mm, 150mm or 100mm centres.

# MULTIPIPE Screed-Rail® System

**PLEASE NOTE:**

For best efficiency, there should be a minimum of 70mm of insulation below the installed screed. If this is not possible, please contact our technical department to discuss alternative options.

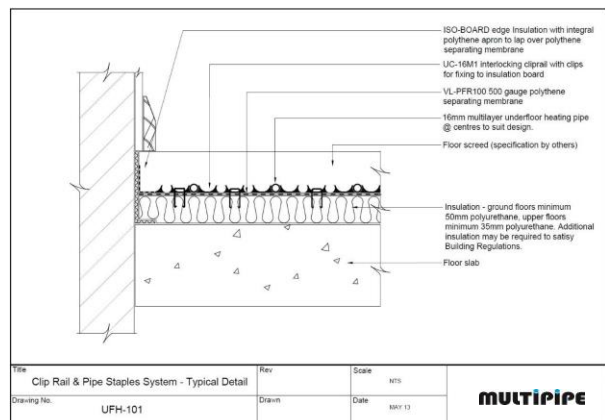
**Laying instructions.**

- Clean and level floor required.
- Install edge insulation.
- Lay specified insulation layer, by others.
- Lay polythene barrier sheet.
- Lay pipe, using the Screed-Rail® and additional clips (If Required) to secure the pipe to the floor.
- Follow design drawings provided by Multipipe, ensuring the correct pipe centres are adhered to and that no loop exceeds 75m (12mm), 120m (16mm), 150m (20mm)
- Cover with screed as per instructions from screed manufacturers.
- Consult your screed provide about curing times.

*We're here to help.....*

**NOTE;**

*All Multipipe underfloor heating systems are provide with full installation instructions and, were agreed, a full system design drawing. If you require any further information during your specification or installation, please do not hesitate to contact us on 01245 227630 .*



Multipipe has complete range of screed, joist and overlay systems. Please visit [www.multipipe.co.uk](http://www.multipipe.co.uk) for details or call 01245 227 630 for details of your local sales manager.