

# MULTIPIPE

WIRELESS RF  
DIAL THERMOSTAT  
(SMART COMPATIBLE)

Model: 22-00001



## Quick Guide

Multipipe Ltd  
Unit 12 Great Hayes Business Park  
Lower Burnham Road  
Stow Maries  
Chelmsford, Essex, CM3 6SQ

**Sales**  
T: 01245 227630  
E: sales@multipipe.co.uk

**Technical**  
T: 01245 850799  
E: technical@multipipe.co.uk

[www.multipipe.co.uk](http://www.multipipe.co.uk)

## Introduction

22-00001 is a wireless dial room thermostat used for underfloor heating and it is compatible offline with coordinator and online with Multipipe SMART system (22-99998).

## Product Compliance

This product complies with the essential requirements and other relevant provisions of Directives 2014/53/EU and 2011/65/EU.  
(CE) 2405-2480MHz; <14dBm

## Safety Information

Use in accordance with the regulations. Indoor use only. Keep your device completely dry. Disconnect your device before cleaning it with a dry cloth.

**Note:** Always isolate the AC Mains supply before installing or working on any components that require 230 VAC 50Hz supply.

## Box content



Thermostat

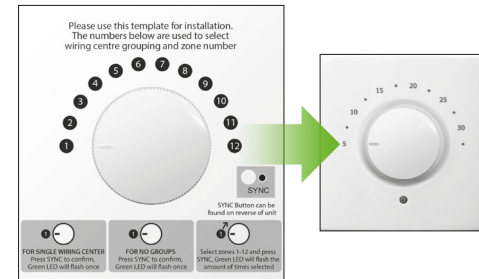
Quick Guide

2 x AA alkaline batteries

2 x fixing screws

## Overlay information

**For reference only.** The image on the left explains the correlation between the temperature scale and the pairing scale. To be used for the initial set-up or in case of Lost Link Error. Please keep the sticker on until installation is complete.

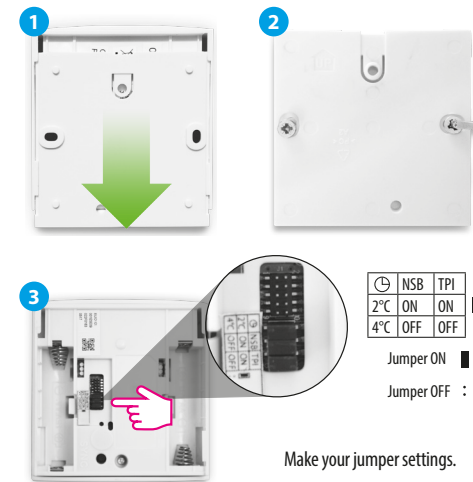


## Overlay information

LED	Meaning
<b>Before pairing</b>	
	Wanting to join network
	Joined the network successfully
	Pairing Complete
	Wiring Centre number selection OK
	Wiring Centre group selection OK
	Wiring Centre zone selection OK
	Identify process ON
<b>Error codes</b>	
	Lost connection
	Thermostat has been reset
	Low battery
	Air sensor is too short or open
	Pairing failed
	Error when trying to add two 22-00001 thermostats to the same Wiring Centre Zone

**Note:** When thermostat is calling for heating/cooling, the LED will be OFF. If you encounter the lost link error, repeat the Pairing procedure.

## Installation

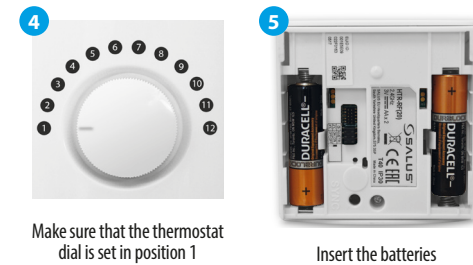


Jumper	Feature	Default
TPI*/SPAN	TPI (jumper ON) or Span 0.5°C (remove jumper)	TPI ON
NSB**	Night Setback ON (jumper ON) or OFF (remove jumper)	ON
Setback value***	-2°C (jumper ON) or -4°C (remove jumper)	-2°C for heating and +2°C for cooling

\*TPI will determine the pattern of your heating periods and will adjust it so that the temperature point will be maintained longer.

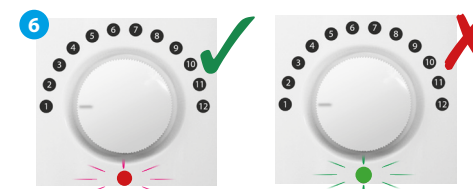
\*\*NSB will only operate if there is a master thermostat set on the Wiring Centre. If there is no master set, there's no need to remove the jumper.

\*\*\*If you have a master thermostat connected to your system and NSB is active, NSB will automatically adjust the setback value according to the selection of the jumper.



Make sure that the thermostat dial is set in position 1

Insert the batteries



Check the status of the thermostat during the first power up. Flashing RED for 2 sec = NOT PAIRED. Flashing GREEN for 2 sec = PAIRED. If thermostat flashes green, but you need to re-pair it, please check the Reset section.

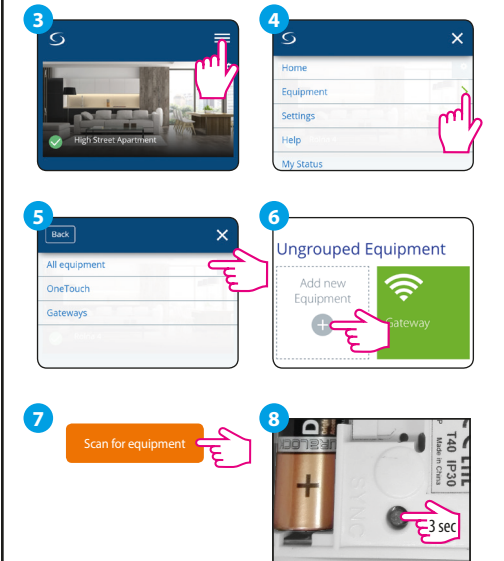
## Pair (online)

Please use the online pairing method when you are using 22-99998 SMART Universal Gateway to configure your system. Follow the on-screen instructions to complete the setup.

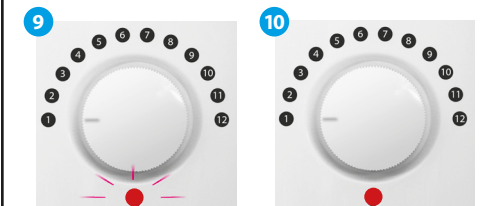


Install the wiring centre according to the instructions attached to the product.

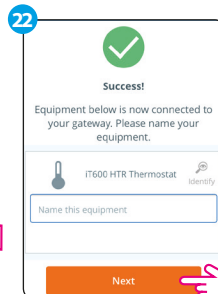
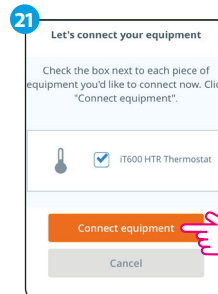
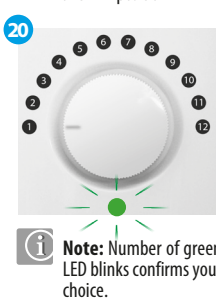
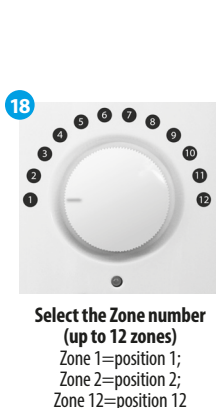
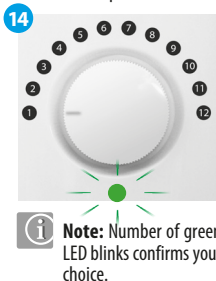
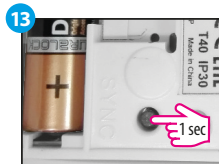
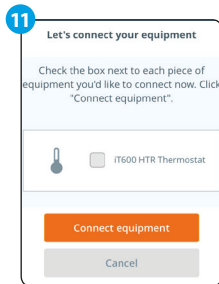
Go to the App.



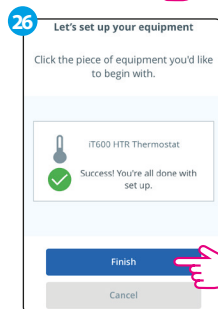
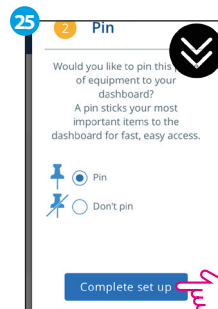
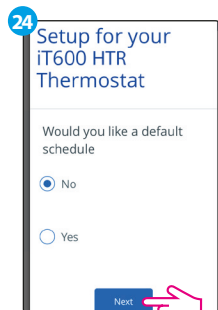
Press the SYNC button until flashing red.



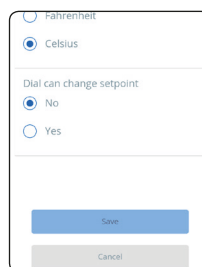
HTR-RF (20) has joined the network once the LED is solid red.



**Optional:** press the magnifying glass symbol. You can identify your device and rename it.



## Dial Function



Dial can change setpoint:  
No - dial disabled (control through the app only)  
Yes - dial can override the app setpoint

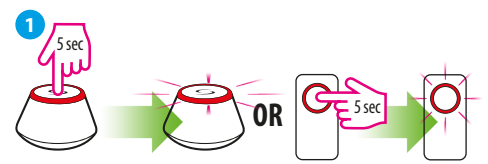
## Pair (offline)

The offline pairing method should be used by non-internet users only.

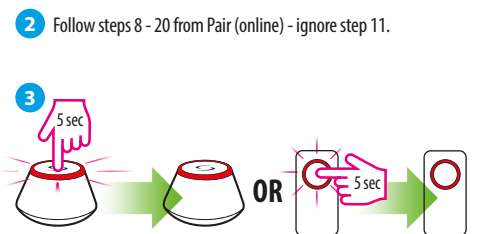
Use the pre-set dial position for pairing 1 wiring Centre, 0 Groups and 1 Zone. For more Wiring Centres, Groups or Zones please move the dial in the desired position.

**Note:** The number of times the LED flashes green will correspond with the number of the Wiring Centre, of the Groups or of the Zones selected.

**WARNING!** Do not use coordinator with SMART Universal Gateway (22-99998) simultaneously.

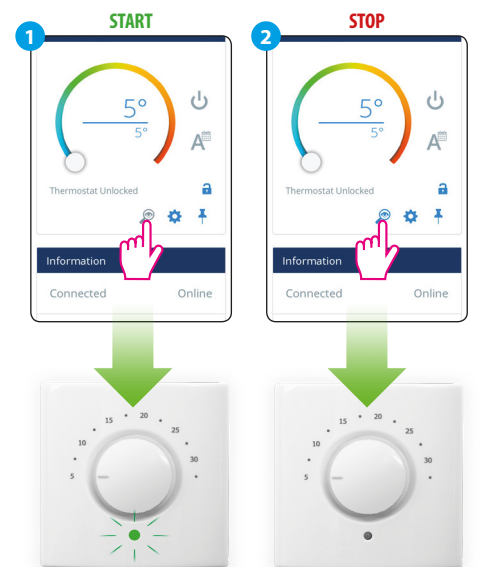


Open the ZigBee network.



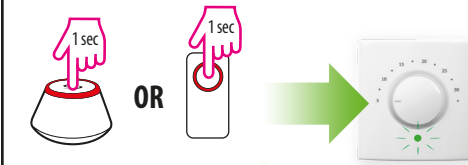
Close the ZigBee network.

## Identify (online)

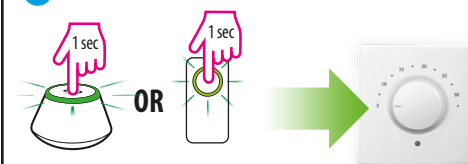


## Identify (offline)

### 1 START



### 2 STOP



## Reset

