

Multipipe

WIRELESS RF
PROGRAMMABLE
THERMOSTAT
(SMART COMPATIBLE)
Model: 22-00003



INSTALLER MANUAL

Multipipe Ltd
Unit 12 Great Hayes Business Park
Lower Burnham Road
Stow Maries
Chelmsford, Essex, CM3 6SQ

Sales
T: 01245 227630
E: sales@multipipe.co.uk

Technical
T: 01245 850799
E: technical@multipipe.co.uk

www.multipipe.co.uk

Introduction

22-00003 is a stylish and accurate programmable room thermostat. You can now simply adjust your home temperature as desired in order to create a comfortable home environment.

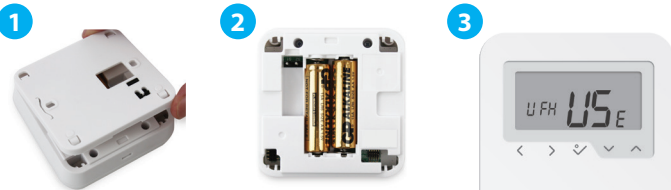
Product Compliance

This product complies with the essential requirements and other relevant provisions of Directives 2014/53/EU (RED) and 2011/65/EU. (P) 2405-2480MHz; <14dBm

Safety Information

Use in accordance with the regulations. Indoor use only. Keep your device completely dry. Disconnect your device before cleaning it with a dry cloth.

Power Up and button function

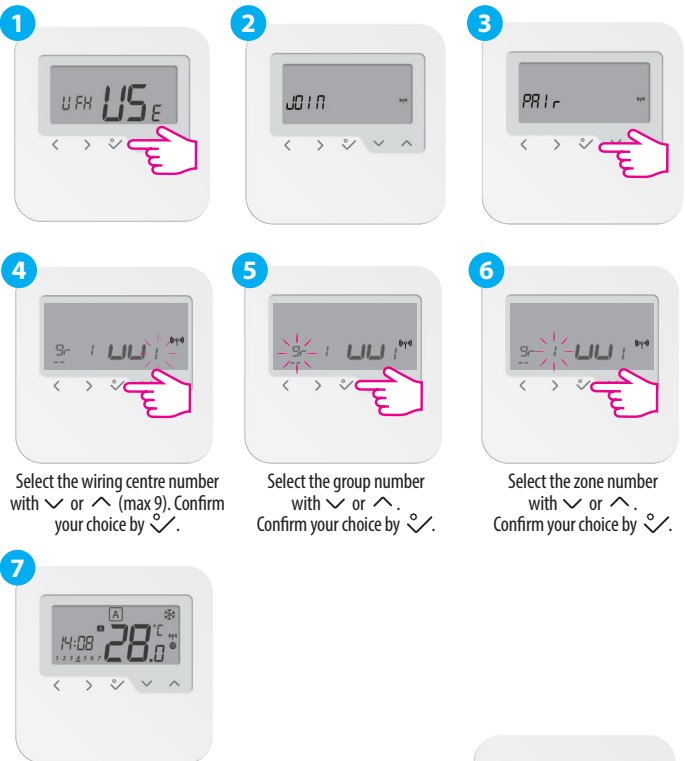


Insert batteries to boot up

Button	Fuction
< >	Mode selection. Long press < to return home without saving. Short press < to return to previous screen.
✓	Decrease or increase Setpoint Temperature. Increase or decrease Day, Clock.
OK	OK key. Short press to confirm selection. Long press to save and return home. Long press to enter Program/Clock/Offset

Pairing with the Wiring Center - offline

When pairing the thermostats with the Wiring Center you can assign a group to a programmable thermostat. This will allow control of up to 11 group thermostats. There can be maximum 2 groups per Wiring Center.

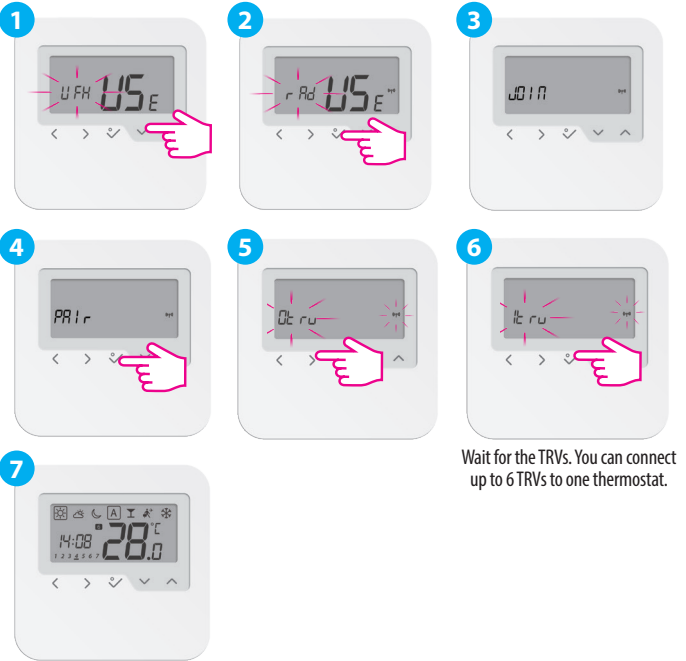


Note: You cannot add two thermostats to the same zone. If you are trying to do this, the following error will be displayed.

Pairing with the TRV- offline



Make sure your TRV is in pairing mode. Please check TRV manual for full process. Max 6TRVs!

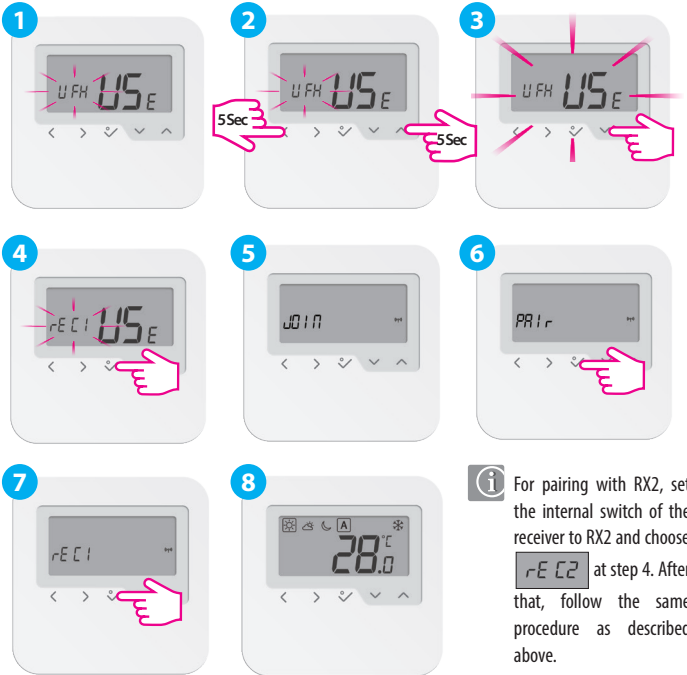


Wait for the TRVs. You can connect up to 6 TRVs to one thermostat.

Pairing with the boiler receiver RX1/RX2



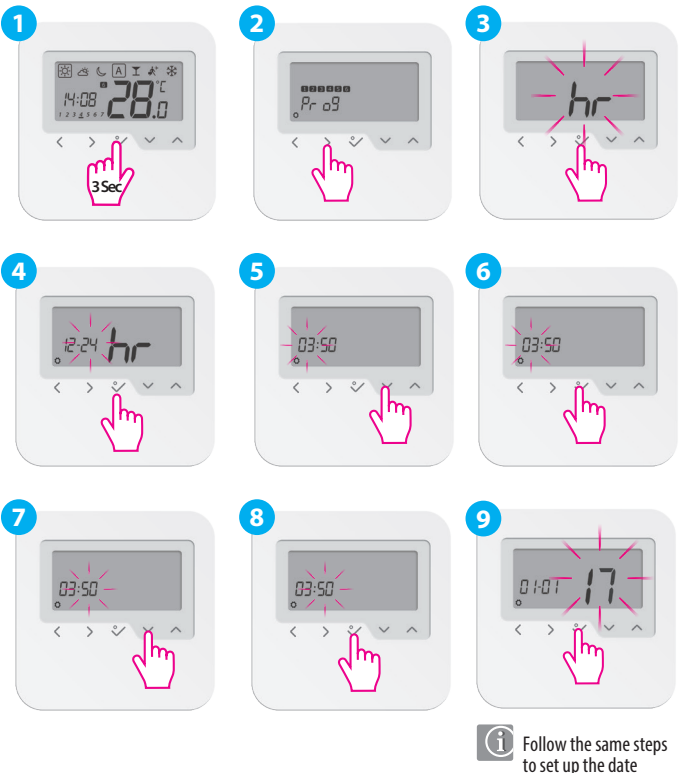
Make sure your receiver is in pairing mode. Please check receiver manual for full process.



Device identification

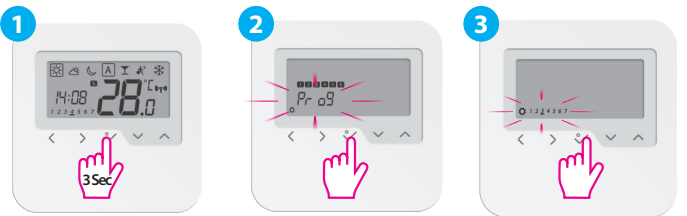


Setting date and time

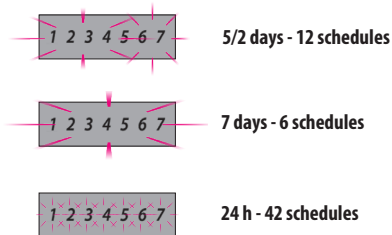


Follow the same steps to set up the date

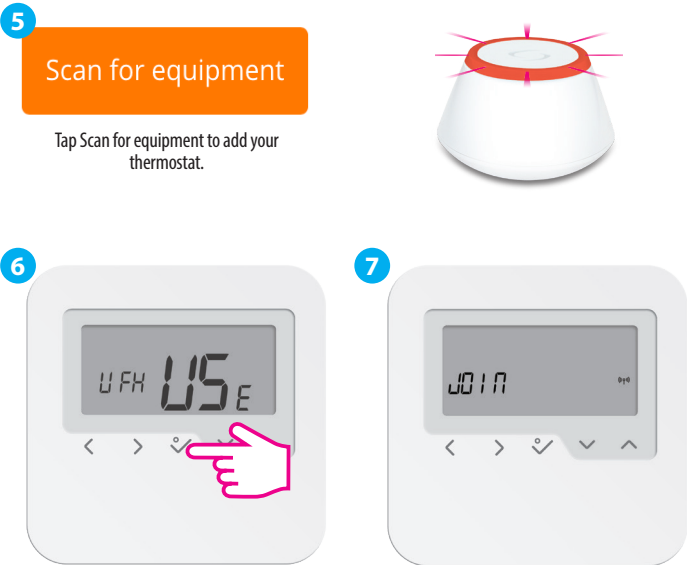
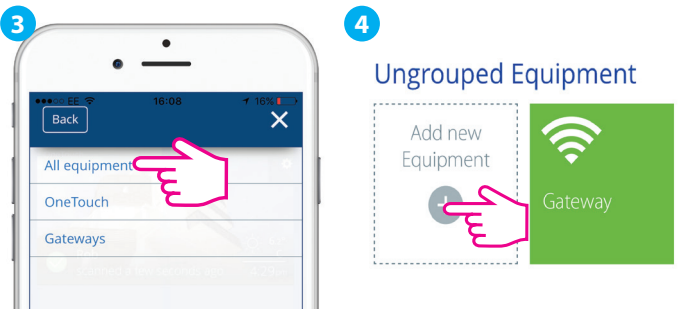
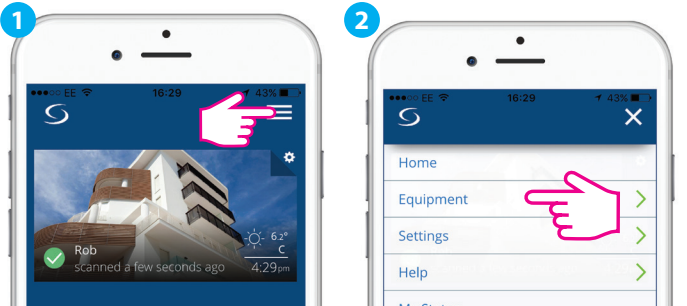
Setting the schedule



Use right and left keys to select the day of the programs.



Pairing with the Wiring Center - online





Select the wiring centre number with \checkmark or \wedge (max 9). Confirm your choice by \checkmark .



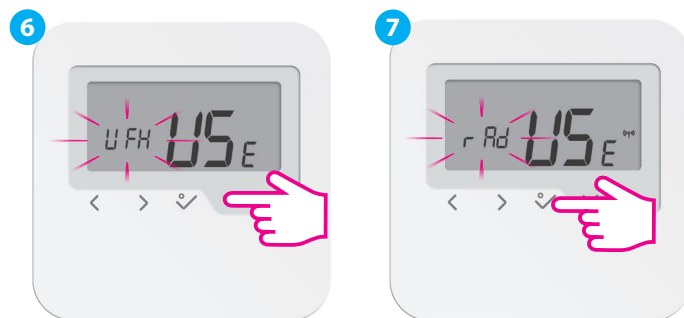
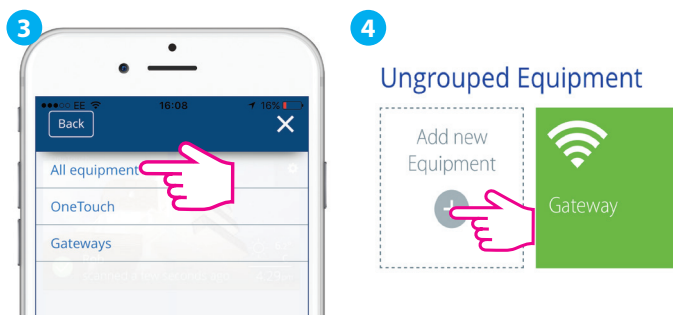
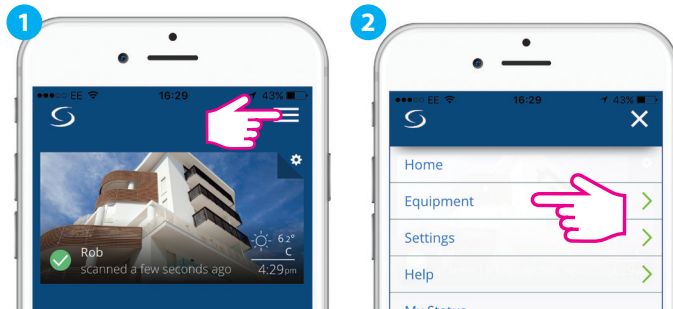
Select the group number with \checkmark or \wedge . Confirm your choice by \checkmark .

Grouping (Offline only).

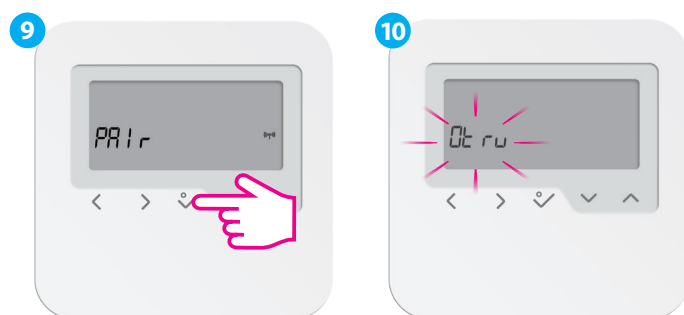


When pairing the thermostats with the Wiring Center you can assign a group to a programmable thermostat. This will allow control of up to 11 group thermostats. There can be maximum 2 groups per Wiring Center. Please follow the on screen instruction in order to complete the pairing process.

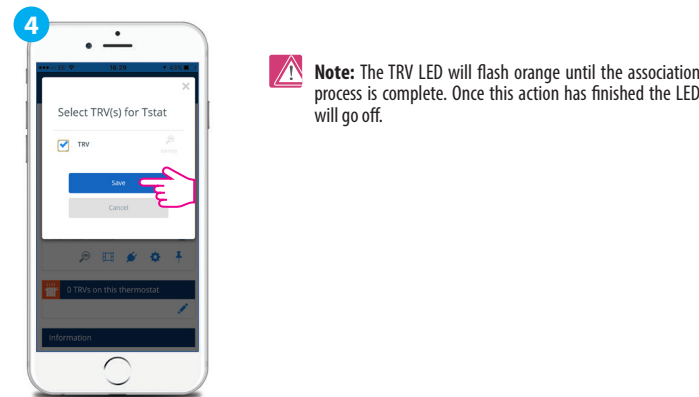
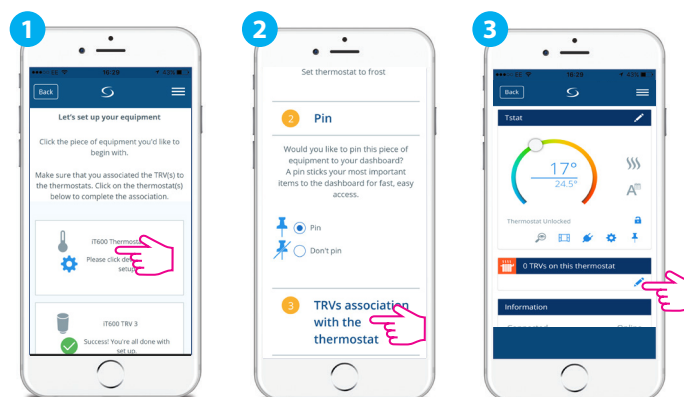
Pairing with the TRV - online



Make sure the TRV is in pairing mode.



Please follow the on screen instruction in order to complete the pairing process. After that continue by associating the TRV(s) to the thermostat(s) (mandatory). Max 6TRVs!

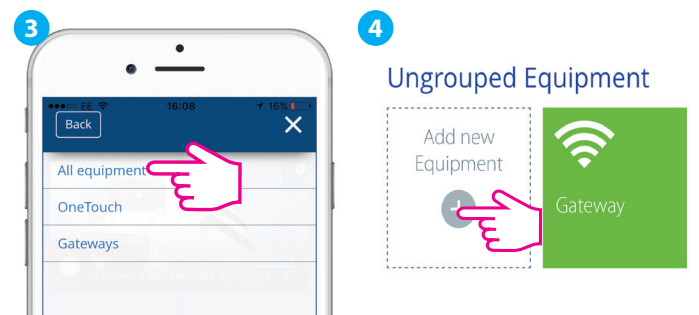
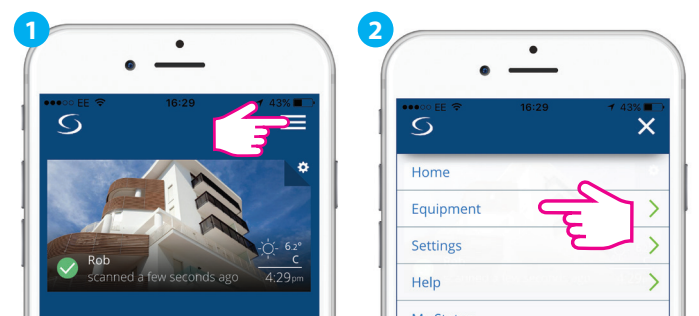


Note: The TRV LED will flash orange until the association process is complete. Once this action has finished the LED will go off.

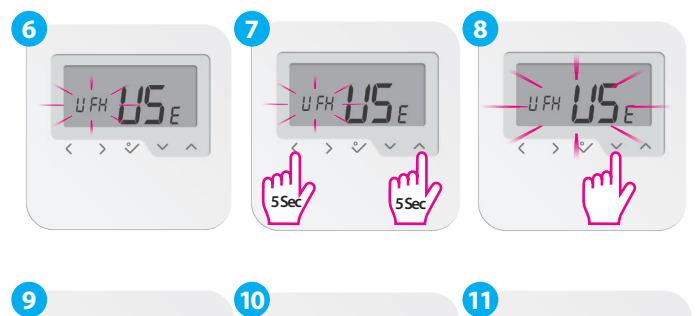
Device identification

To identify your devices, tap the icon on the app screen. The LED (or screen) on the enquired device will flash.

Pairing with the boiler receiver RX1/RX2 - online

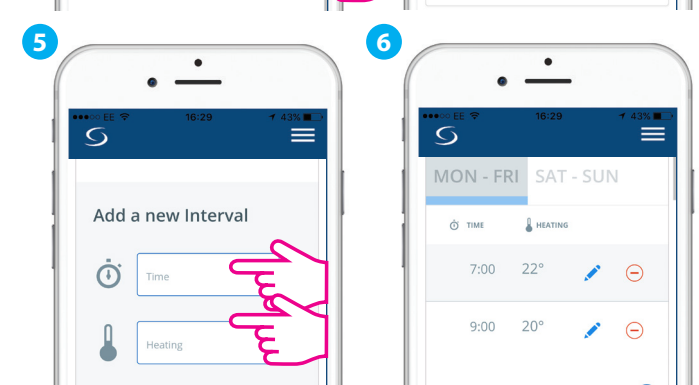
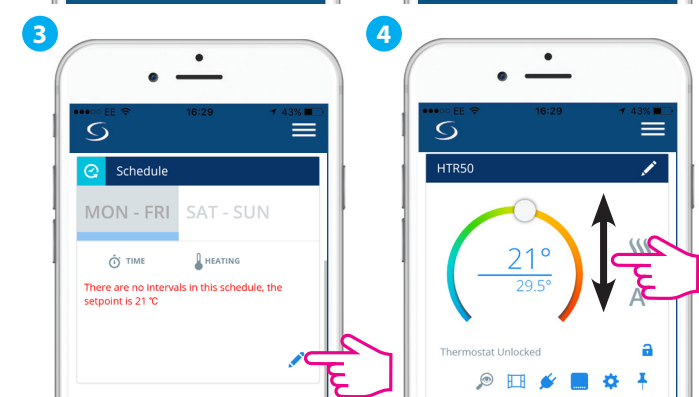
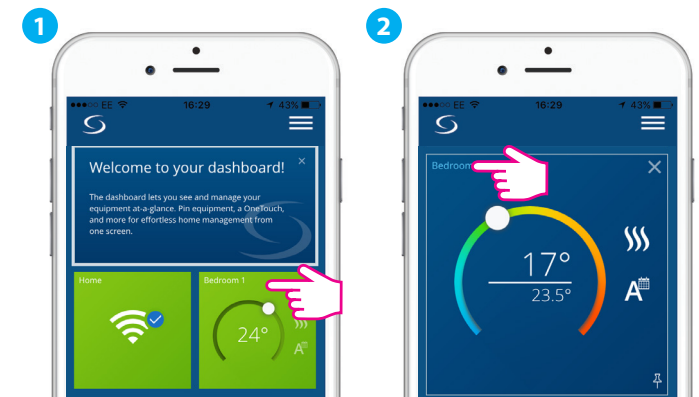


Make sure your receiver is in pairing mode. Please check receiver manual for full process.



For pairing with RX2, set the internal switch of the receiver to RX2 and choose **rEE2** at step 4. After that, follow the same procedure as described above.

Setting the schedule



Note: Once connected to the App, the time and date will update automatically. Select the desired programming mode (5/2 days, 7 days or 24h) and create your own schedule.

Factory Reset

