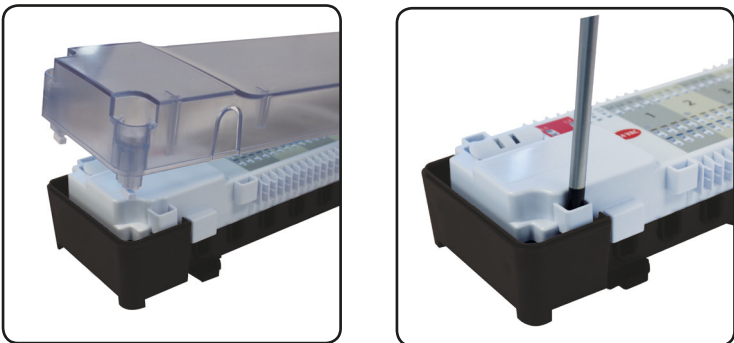


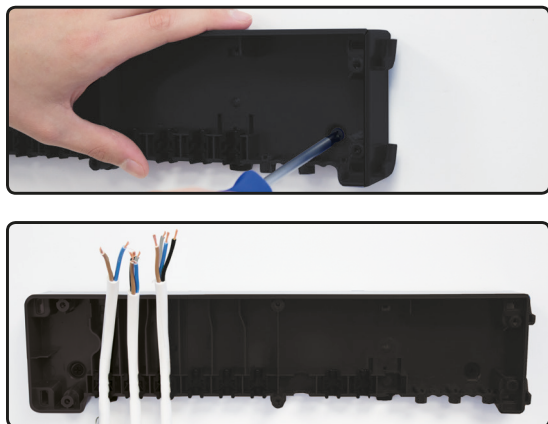
Installing the 22-02413 Master 8-Zone Wiring Centre 24V

Use the wired wiring centre to simply and safely connect thermostats and corresponding thermal actuators.

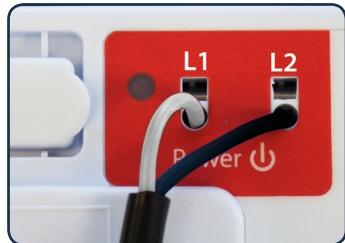
1 Remove the cover and the white terminals plate.



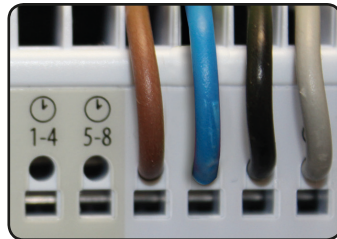
2 Fix the backplate on the wall and add the wires for power and all the thermostats.



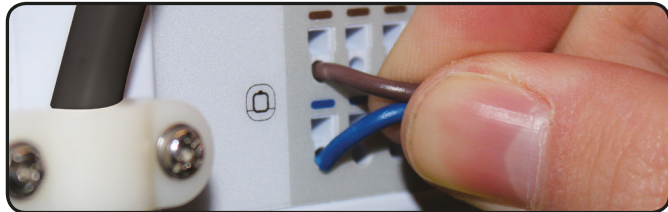
3 Connect the power source.



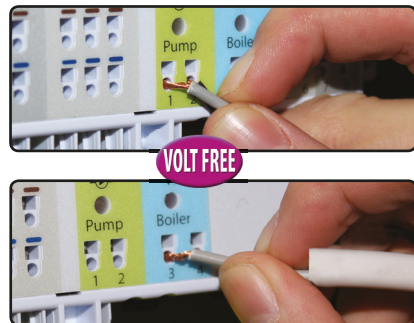
4 Connect your thermostats to the 22-02413.



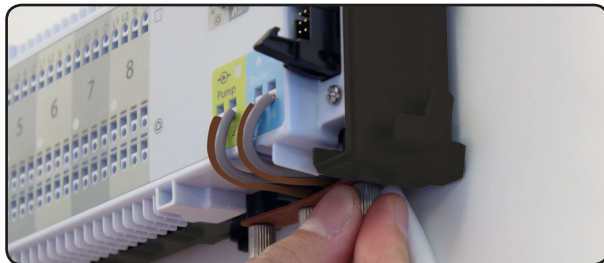
5 You can connect up to 16 actuators.



6 Volt-free pump/boiler switching (see wiring diagram).



7 Secure the pump, boiler with the red strain-relieving strip.



8 Make sure the fuse is fitted (4Amp).



9 Set the jumpers at the top of the 22-02413

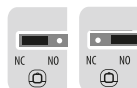
Jumper Settings/Positions for Pump/Boiler On/Off Delay

The default setting for the boiler off delay is three minutes, but can be changed to 15 minutes. To do this, carefully remove the jumper and re-insert it in the other position as shown:



Type of Actuator

The default setting for the actuator is normally closed (NC). To change this setting to normally open (NO), remove the jumper and re-insert it in the other position as shown:
Note: the actuator and thermostat settings must be the same.



10 Reattach the plastic cover. Switch on the power. The red LED turns on.

