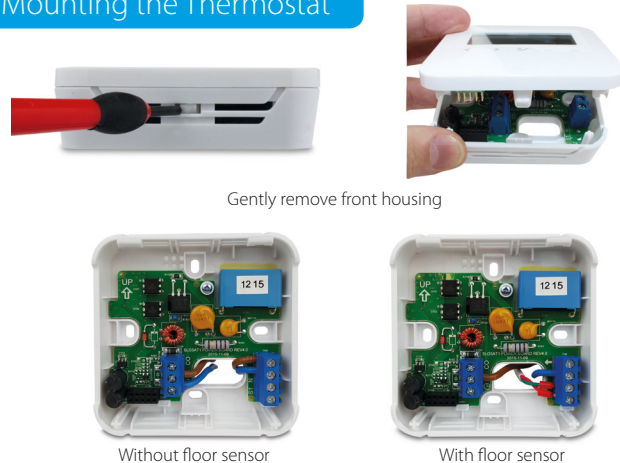


1. Mounting the Thermostat



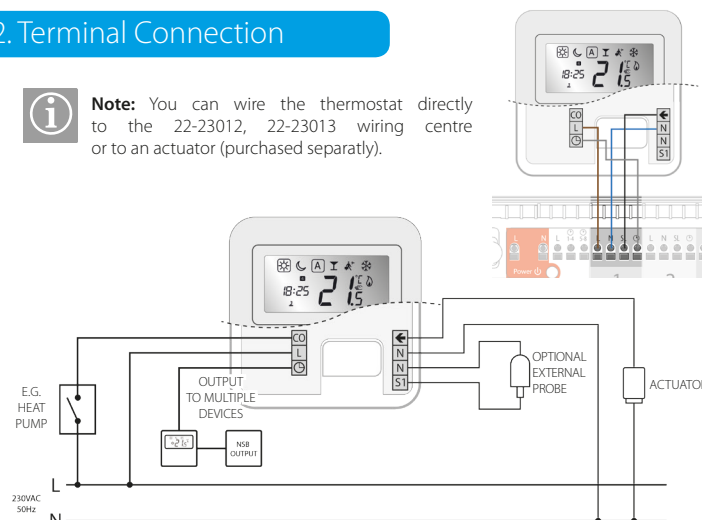
Gently remove front housing

Without floor sensor

With floor sensor

2. Terminal Connection

Note: You can wire the thermostat directly to the 22-23012, 22-23013 wiring centre or to an actuator (purchased separately).



3. Thermostat Icons

	BOX means to select mode. e.g. means Hi temp is selected means the Hi temp is not selected.
	Sunny: Hi comfortable temperature
	Moon: Low comfortable temperature
	Indicates AUTO ON or AUTO OFF
	Režim party
	Indicates that the Holiday Mode is ON
	Frost Protection Indicator: Frost protection is active, not available in cooling mode
	Heat Mode indicator: Indicates heating is running

4. Thermostat Icons

	Cool Mode indicator: The icon is flashing when cooling mode is active
	Temperature indicator • Display the room temperature • Display the set temp
	Temporary override indicator: The hand will appear until the next programs starting
	Programs number indicator
	Indicates the time
	Indicates the day of the week

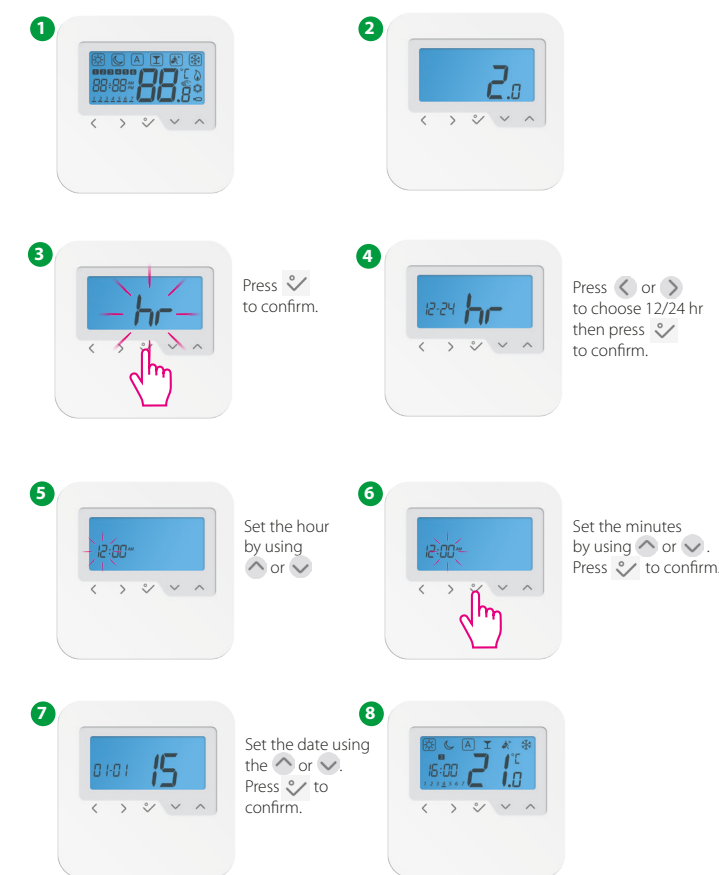
5. Button Functions

	Mode selection. Long press to return home without saving.
	OK key: Short press to confirm selection. Long press to save and return home. Long press to enter Temperature offset Heat/Cool.
OR	Decrease or increase Setpoint Temperature.

Note: LCD backlight is activated by pressing any key.

6. Setting Date and Time

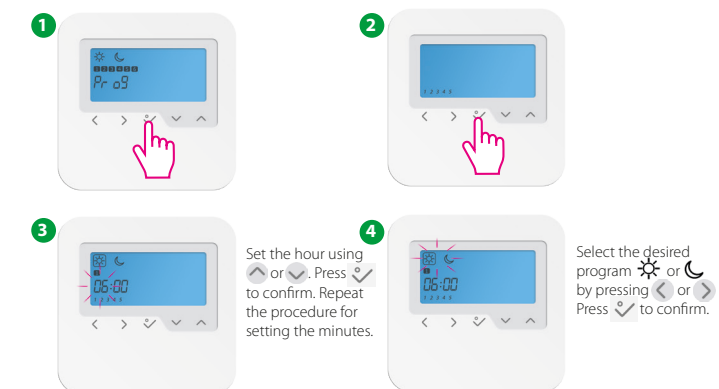
When you first power up your device you will have to set up the date and time.



Note: You can access the date and hour by long pressing . After that press and to confirm.

7. Setting Your Programs

You can customise your programs by long pressing when on the program screen.



Note: If you want to select another Program Profile (from the available 5), please enter in Installer Mode, choose option d17 and after that select the desired program.

7. Setting Your Programs

You can select and customise any of the following programs:

Program Profile 1

5 days (Monday to Friday)				2 days (Saturday to Sunday)			
Program	Program Time	Heat set point	Cool set point	Program	Program Time	Heat set point	Cool set point
1	6:00	Sunny	Sunny	1	7:00	Sunny	Sunny
2	9:00	Moon	Moon	2	23:00	Moon	Moon
3	16:00	Sunny	Sunny	3	--:--	--:--	--:--
4	23:00	Moon	Moon	4	--:--	--:--	--:--
5	--:--	--:--	--:--	5	--:--	--:--	--:--
6	--:--	--:--	--:--	6	--:--	--:--	--:--

Program 2

5 days (Monday to Friday)				2 days (Saturday to Sunday)			
Program	Program Time	Heat set point	Cool set point	Program	Program Time	Heat set point	Cool set point
1	6:00	Sunny	Sunny	1	7:00	Sunny	Sunny
2	22:30	Moon	Moon	2	23:00	Moon	Moon
3	--:--	--:--	--:--	3	--:--	--:--	--:--
4	--:--	--:--	--:--	4	--:--	--:--	--:--
5	--:--	--:--	--:--	5	--:--	--:--	--:--
6	--:--	--:--	--:--	6	--:--	--:--	--:--

Program 3

5 days (Monday to Friday)				2 days (Saturday to Sunday)			
Program	Program Time	Heat set point	Cool set point	Program	Program Time	Heat set point	Cool set point
1	5:00	Sunny	Sunny	1	7:30	Sunny	Sunny
2	8:00	Moon	Moon	2	22:30	Moon	Moon
3	14:00	Sunny	Sunny	3	--:--	--:--	--:--
4	22:00	Moon	Moon	4	--:--	--:--	--:--
5	--:--	--:--	--:--	5	--:--	--:--	--:--
6	--:--	--:--	--:--	6	--:--	--:--	--:--

Program 4

5 days (Monday to Friday)				2 days (Saturday to Sunday)			
Program	Program Time	Heat set point	Cool set point	Program	Program Time	Heat set point	Cool set point
1	6:00	Sunny	Sunny	1	7:30	Sunny	Sunny
2	9:00	Moon	Moon	2	23:00	Moon	Moon
3	15:00	Sunny	Sunny	3	--:--	--:--	--:--
4	22:30	Moon	Moon	4	--:--	--:--	--:--
5	--:--	--:--	--:--	5	--:--	--:--	--:--
6	--:--	--:--	--:--	6	--:--	--:--	--:--

Program 5

5 days (Monday to Friday)				2 days (Saturday to Sunday)			
Program	Vreme	Heat set point	Cool set point	Program	Vreme	Heat set point	Cool set point
1	6:00	Sunny	Sunny	1	7:30	Sunny	Sunny
2	10:00	Moon	Moon	2	23:30	Moon	Moon
3	16:00	Sunny	Sunny	3	--:--	--:--	--:--
4	23:00	Moon	Moon	4	--:--	--:--	--:--
5	--:--	--:--	--:--	5	--:--	--:--	--:--
6	--:--	--:--	--:--	6	--:--	--:--	--:--

MULTIPIPE

PROGRAMMABLE 230 V
THERMOSTAT
Model: 22-23003



INSTALLER MANUAL

Multipipe Ltd
Unit 12 Great Hayes Business Park
Lower Burnham Road
Stow Maries
Chelmsford, Essex, CM3 6SQ

Sales
T: 01245 227630
E: sales@multipipe.co.uk

Technical
T: 01245 850799
E: technical@multipipe.co.uk

www.multipipe.co.uk

Product Compliance and Safety Info

Product Compliance

This product complies with the essential requirements and other relevant provisions of Directives: 2014/30/EU, 2014/35/EU and 2011/65/EU.

Safety Information

Use in compliance with safety regulations. The unit is to be used for the control of room temperature inside the house.

Installation

This accessory must be fitted by a competent person, and installation must comply with the guidance, standards and regulations applicable to the city, country or state where the product is installed. Failure to comply with the relevant standards could lead to prosecution.

Contents of the box

Icons used in this manual:



Manual Contents:
Box Contents
Introduction
Product Compliance and Safety Information
Installation
User Interface
Status/LED indication
Installers notes
Warranty



Product Description

Thank you for purchasing. This thermostat is a device that lets you customize the heating and cooling of your home as needed.

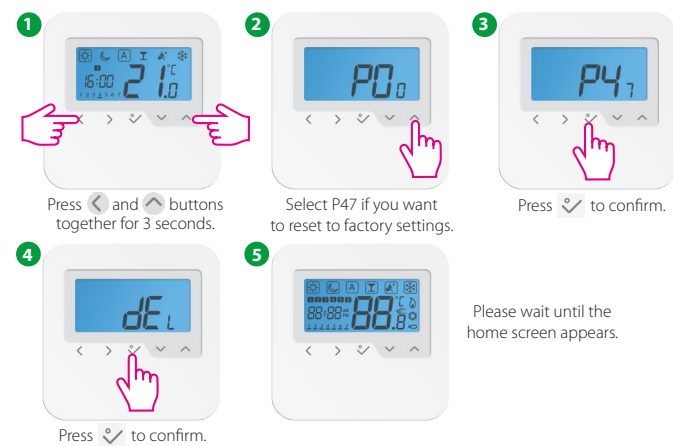
The 22-23003 device from Multipipe is a stylish and accurate digital room thermostat that is fitted with a large easy to read LCD screen and one touch buttons.

You can now simply adjust your home temperature as desired in order to create a comfortable home environment. We hope you enjoy our product.

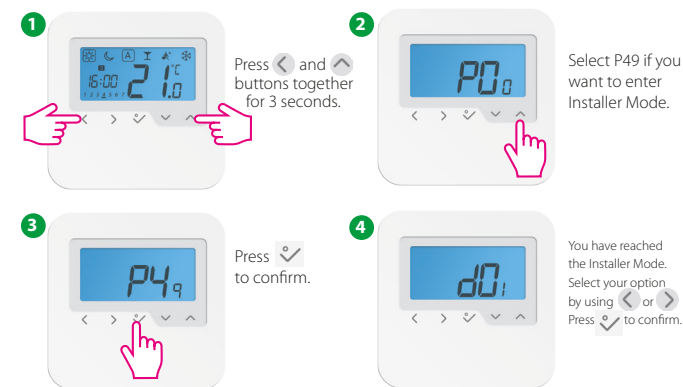
Installing the unit

Install the digital room thermostat roughly about 1.5m above floor level. It should be mounted in a location where the thermostat is easily accessible and away from direct sunlight. You can mount the thermostat directly on the wall or you can install it on top of a wall-box.

8. How to reset the thermostat



9. Installer Mode



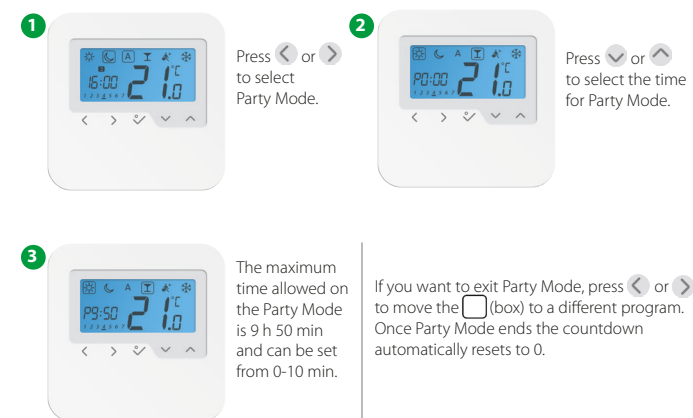
Note: This function allows you to customise your thermostat as you desire. In order to do this please consult the tables on the next pages.

11. Cooling Blocked

When the thermostat is set on Cooling Disabled (d19-->1) it will block the cooling function for single rooms until the device will receive the heating command. During the periods of cooling blocked no special indicator will be displayed on the LCD screen. Ice flake will also be turned off.

Note: d19 will be available only if d18 is set on 1 (Heat/Cool Mode selection Connected).

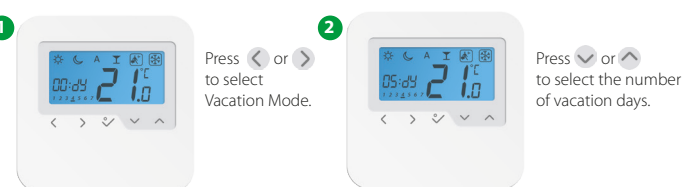
12. Party Mode



10. Functions explained

dxx	D setting function	Parameter/Values	Definition	Default value
d01	Heating Control	0	PWM (Pulse-width modulation)	0
		1	Span 0.5°C (± 0.25°C)	
		2	Span 1.0°C (± 0.5°C)	
d02	Room temp. offset	-3.0°C to +3.0°C	Offset room temp measuring error (in 0.5°C)	0°C
d03	OUT sensor probe (S1/S2)	0	Out sensor probe not connected	0
		1	Out sensor probe connected	
d04	Air sensor or Floor sensor	0	A: if d03 = 0, IN sensor controls Tr A: if d03 = 1, IN disabled and OUT controls Tr F: if d03 = 0, IN sensor controls Tr F: if d03 = 1, IN disabled and OUT controls Tr Floor Protection	0
		1		
d05	Cooling Control	1	Span 0.5°C (± 0.25°C)	2
		2	Span 1.0°C (± 0.5°C)	
d07	Valve Protection	0	VP disabled	1
		1	VP enabled	
d08	Frost Setpoint	5°C - 17°C		5°C
d09	12/24 Hour Format	0	12 hr	1
		1	24 hr	
d11	Daylight Saving Time (DST)	0	OFF	1
		1	ON	
d12	Maximum limitation of heating setpoint	5°C - 35°C		35°C
d13	Maximum limitation of cooling setpoint	5°C - 40°C		5°C
d14	Floor sensor protection limit (heating high limit-HL)	11°C - 45°C	Turn off relay output when floor sensing temp > protecting limit, step is 0.5°C	27°C
d15	Floor sensor protection limit (heating low limit-LL)	6°C - 40°C	Turn on relay output when floor sensing temp < protecting limit, step is 0.5°C	10°C
d16	Floor sensor protection limit (cooling)	6°C - 45°C	Turn off relay output when floor sensing temp < protecting limit, step is 0.5°C	6°C
d17	Preset program selection	1-5	Select one of these 5 default programs. Once selected, default program will overwrite present program. Selected default program can be edited by the user in the User Setting Mode.	1
d18	Heat/Cool Mode Selection	0 or 1	0: No connection 1: Connection	0
d19	Cooling Blocked	0 or 1	0: Cooling allowed 1: Cooling disabled	0
d20	Actuators loading selection for different temperature compensation.	1 or 5	1: x 1 actuator loading 2: x 2 actuators loading 3: x 3 actuators loading 4: x 4 actuators loading 5: x 5 actuators loading	1

13. Vacation Mode

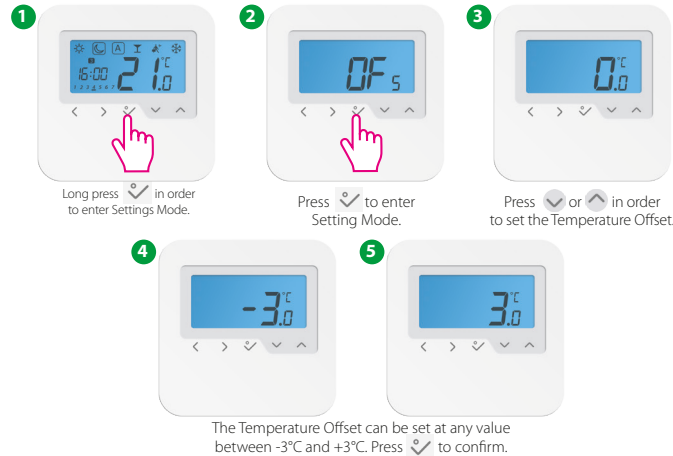


Note: Vacation Modes ends when it reaches day 0. After that the device goes back to Auto Mode.

14. Frost Mode



15. Temperature Offset



Technical Specification

Model:	22-23003
Voltage	230 V AC, +/- 10%, 50/60 Hz
Operating performance	230 V: 1,8 W
Temperature setback	Adjustable
Temperature range	5°C – 35°C
Span	+/- 0,5°C or +/- 0,25°C
Storage temperature	-20°C to +60°C
Ambient temperature	0 °C to 45 °C
Degree of protection	IP 30
CE conformity according to	Class II (EN60730)
Housing material	PC, V2
Color	RAL 9010 pure white
Connection	Screw terminal
Weight	125 g net / 170 g gross
Puls-wide-modulation (PWM)	Yes
Clock, Timer	Yes, programmable
Profile Modes	3 (Sun, Moon, Automatic)
Heating and Cooling	Yes, automatically Change Over on the Wiring Centre
Parameter adjustment	Yes, in Installer Mode
Dimensions	85mm x 85mm x 25mm

Warranty

Multipipe warrants that this product (22-23003) will be free from any defect in materials or workmanship, and shall perform in accordance with its specification, for a period of five years from the date of installation. Multipipe sole liability for breach of this warranty will be (at its option) to repair or replace the defective product.

Customer Name:

Customer Address:

..... Post Code:

Tel No: Email:

Engineers Company:

Tel No: Email:

Installation Date:

Engineers Name:

Engineers Signature: