

# MULTIPIPE

## Single Channel Digital Time Clock for 230V

Model: 22-23015



INSTALLER MANUAL



www.multipipe.co.uk

**Multiple Ltd**  
Unit 12 Great Hayes Business Park  
Lower Burnham Road  
Stow Maries  
Chelmsford  
Essex  
CM3 6SQ  
E: technical@multipipe.co.uk  
T: 01245 850799  
**Technical**  
E: sales@multipipe.co.uk  
T: 01245 227630  
**Sales**



### Introduction

A programmable controller is used to switch the heating system and/or the hot water in your home on and off as needed. It works by controlling the central heating and/or the hot water with programmed settings that take effect at different times of the day.

### Product Compliance

EU Directives: 2014/30/EU, 2014/35/EU and 2011/65/EU.



### Safety Information

Use in accordance with the EU and national regulations.  
For indoor use only.

Keep your device completely dry. This product must be installed by a competent person and in accordance with all the EU and national regulations.



**Always isolate the AC Mains supply before installing or working on any components that require 230 VAC 50Hz supply.**

Thank you for purchasing the 22-23015 Single Channel Digital Time Clock for 230 V.

The Single Channel Digital Time Clock is recommended for users that want to control only the Central Heating or the Hot Water system.

22-23015 Single Channel Digital Time Clock  
CH or HW



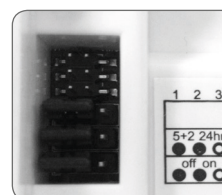
### Installation

Input: 230V, 50Hz  
Output: 3A/ switch terminal

Terminal	Description	Backplate
N	Mains Neutral	
L	Mains Live	
1	Not Used	
2	Not Used	
3	Volt Free Connection	
4	Volt Free Connection	
	Earth Parking (no electrical connection)	

### Jumper Settings

Changes to the jumpers settings should only be made by the Engineer carrying out the installation or other qualified person. The installer should select the jumper positions required if changes need to be made to the factory default settings. These jumpers are found on the rear of the controller.

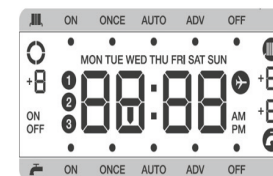


### 22-23015 Switching Bridges

Switch	Feature	22-23015 Settings
System	Fully pumped system(P*) or gravity-fed hot water system(G*)	NA
Program	5-2 days programme or 24h programme	5-2
Memory Backup	Disable/enable the internal backup battery	OFF

\* P - Fully pumped system for independent Central Heating and Hot Water.  
\* G - Gravity Hot Water system with Pumped Central Heating.

### First Power Up



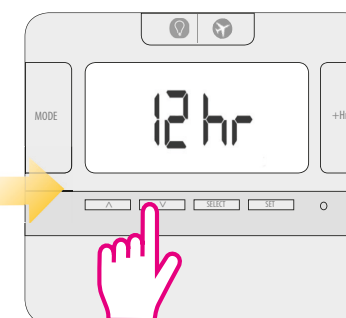
### Button Function

Backlight/Holiday		1. Turn on the LCD backlight 2. Press for 3 sec to activate Holiday mode
Mode		Select operating mode (ON, ONCE, AUTO, ADV, OFF)
+1Hr		Activate/deactivate Boost function
Down		Decreases the selected setting
Up		Increases the selected setting
Select		Select a clock or programme setting
Set		Sets a clock or programme setting
Reset		Reset to Factory settings

### Setting date and time

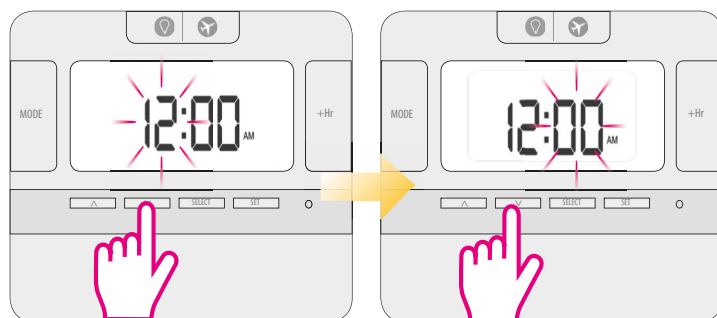


Press and hold the indicated buttons together for 3 sec.



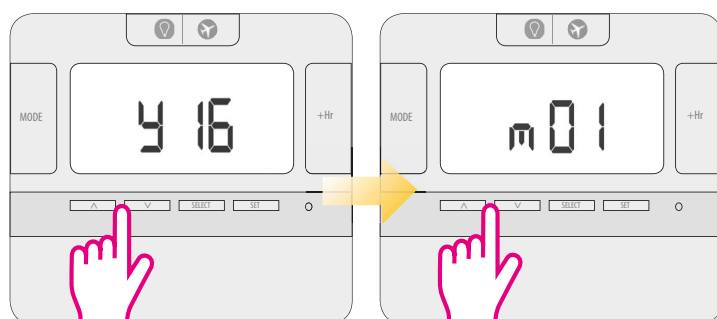
Choose your clock format and press Select.

## Setting date and time



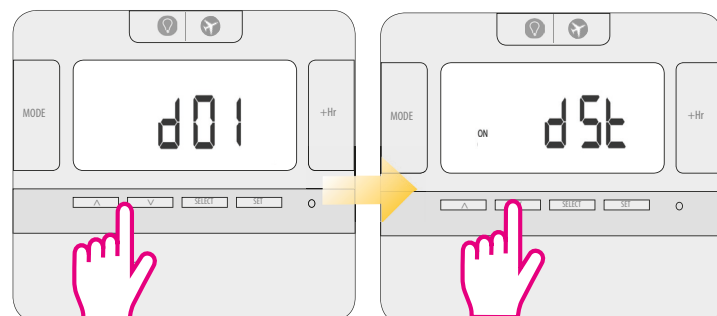
Press Up or Down to set the hour.  
Press Select to confirm.

Press Up or Down to set the minutes.  
Tap on Select to confirm.



Press Up or Down to set the year.  
Tap on Select to confirm.

Press Up or Down to set the month.  
Tap on Select to confirm.



Press Up or Down to set the day.  
Tap on Select to confirm.

Press Up or Down to set the  
Daylight SavingTime On or Off.  
Tap on Set to confirm.

## Operating modes

The Single Channel Digital Time Clock has the following operating modes. You can select them by pressing the MODE button.

Operating Mode	Function
ON	Continuously on
ONCE	On for 1 period a day, from Program 1 ON to Program 3 OFF
AUTO	Automatic program control
ADV	When device is in Auto or Once mode, press the MODE button for 3 sec for selecting Advance (ADV). This will move the unit into the next program. When the ADV function ends the device will return to normal program.
OFF	Continuously off

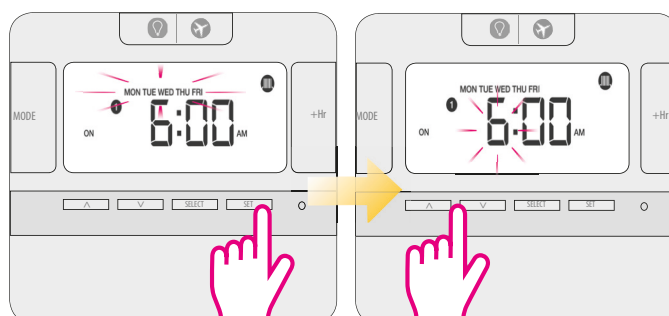
**Note:** In ONCE or AUTO mode, by long pressing the MODE button, the controller will switch automatically to ADV. You can cancel the ADV by long pressing the MODE key. The device will then return to ONCE or AUTO mode.

## Programming the 22-23015

You can create personalized programmes for your controller. You have the option to choose between a 5-2 days programme or a daily one by using the jumpers.

### 5-2 Days Programme

Weekdays  
3 sets of time/channel  
Weekends  
3 sets of time/channel  
Total: 6 settings/week



Press Set, then Up or Down to  
select weekdays or weekends.  
Press Select to confirm.

Press Up or Down to set the hour.  
Press Select to confirm.


Please repeat the procedure for all the programmes and channels that are available for this model.

### Individual days programme

22-23015 (1 Channel)

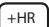
1 Day  
3 sets of time/channel  
Total: 21 settings/week

**Note:** Don't forget to move the jumpers to 24h in order to have the individual programme active. After that please follow the same instructions as for the 5-2 days programme.




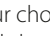

The circle will be rotating for 22-23015 will remain steady when the relay  output is ON.

## Other Functions

### 1. +Hr Program Override (Boost)

This function is available in ONCE/AUTO/ADV/OFF. After pressing the button, the function will be immediately applied. You can override the program for maximum 9 hours. For cancelling the Boost function, press the  button repeatedly until the +8 hours disappears.

### 2. BL/Holiday function

Press the  button once and the backlight will be turned on. Press and hold the  button for 3 seconds to activate the Holiday Mode. Press  or  to select the number of days for the Holiday Mode and to confirm your choice. Press and hold the  button for 3 seconds to cancel the Holiday Mode.

### 3. Factory Reset

If you want to return to the factory settings please press the Reset button once (use a pin for this action).

