

Introduction

The Multipipe 22-99998 SMART Universal Gateway is the key product for the entire system. This will offer you the possibility to wirelessly control all the connected equipment just by using your smartphone or your computer.

Product Compliance

EU Directives: 2011/65/EU and 2014/53/EU Radio Equipment Directive (RED). Please check [www.saluslegal.com](http://www.saluslegal.com) for the full information. Radio Frequency Range 2405 MHz - 2480MHz, Max Transmitting Power: < 20 dBm.



Safety Information

Use in accordance with the regulations.  
Indoor use only.  
Keep your device completely dry.  
Disconnect your device before cleaning it with a dry cloth.



This product must be used with the Smart Home App.

Devices that can be connected



SMART Room Thermostats



Boiler Receiver



Thermostatic Radiator Valve



Window/Door Sensor



Electric Monitor



Repeater



Smart Plug



16 Amp Relay



RF UFH Wiring Centre



[www.multipipe.co.uk](http://www.multipipe.co.uk)

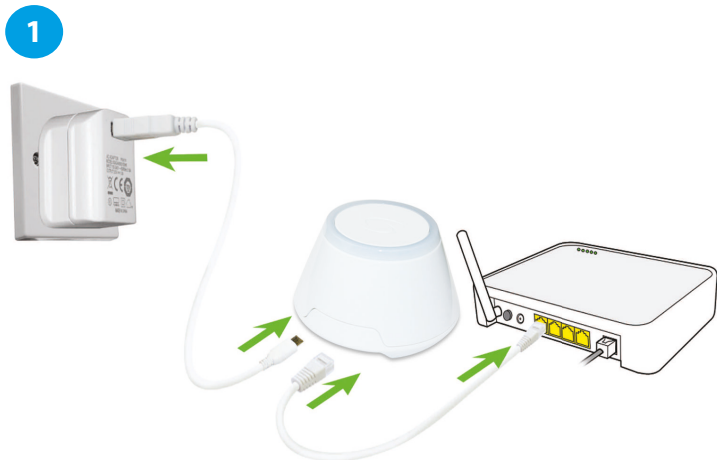
**Multipipe Ltd**  
Unit 12 Great Hayes Business Park  
Lower Burnham Road  
Stow Maries  
Chelmsford  
Essex  
CM3 6SQ  
**Sales**  
T: 01245 227630  
E: [sales@multipipe.co.uk](mailto:sales@multipipe.co.uk)  
**Technical**  
T: 01245 850799  
E: [technical@multipipe.co.uk](mailto:technical@multipipe.co.uk)

**MULTIPIPE**

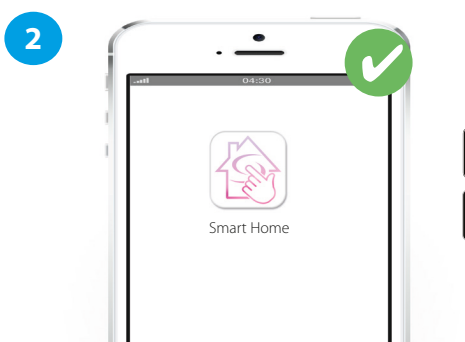
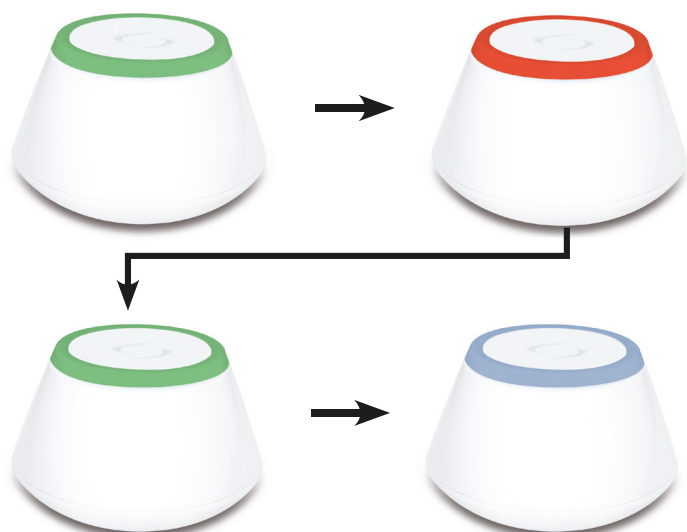
SMART Universal Gateway  
Model: 22-99998



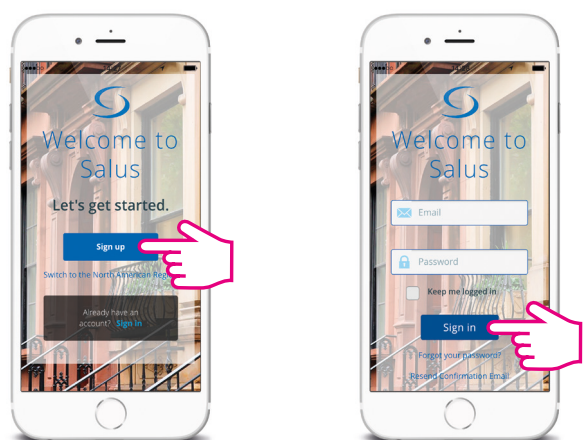
Installation manual



Power up




3 Sign up, create an account and confirm it.  
After that please Sign in.



4 Follow the on screen instructions.



5 **Success!** You have connected your gateway.

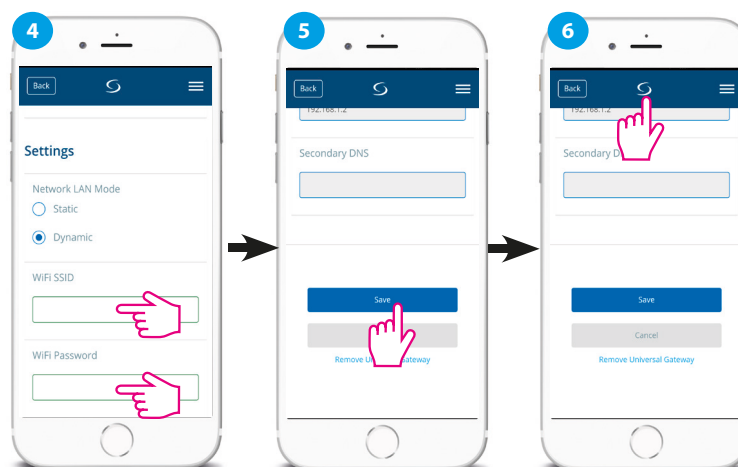
Press  to go to the Dashboard.

6 **Optional:** Connect your SMART Universal Gateway to the WiFi. First add the gateway on the APP by using the Ethernet cable. Create the WiFi settings and then remove the Ethernet cable.

**WiFi SSID** = the name of your network (Case sensitive)

**WiFi Password** = the password of your network (Case sensitive)

**Note:** The WiFi Internet connection might not be as stable as the one on cable.

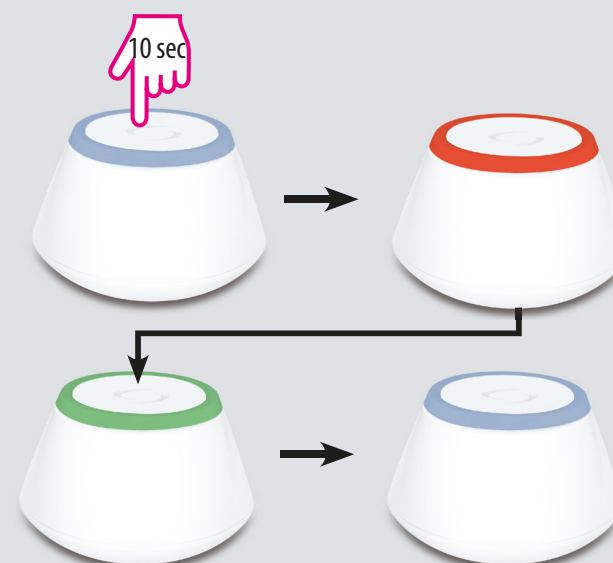


Wait 2 min and then remove the Ethernet cable from the SMART Universal Gateway.



**Factory Reset:** USE ONLY if you want to reset your device. Press the button for 10 sec. When the process is complete the LED will be blue.

With Internet connection



Without Internet connection

