

Product Code: 11-29010,11-29030,11-29031,11-29040

Product Description: Wall Plate Elbow

### Product Specification:

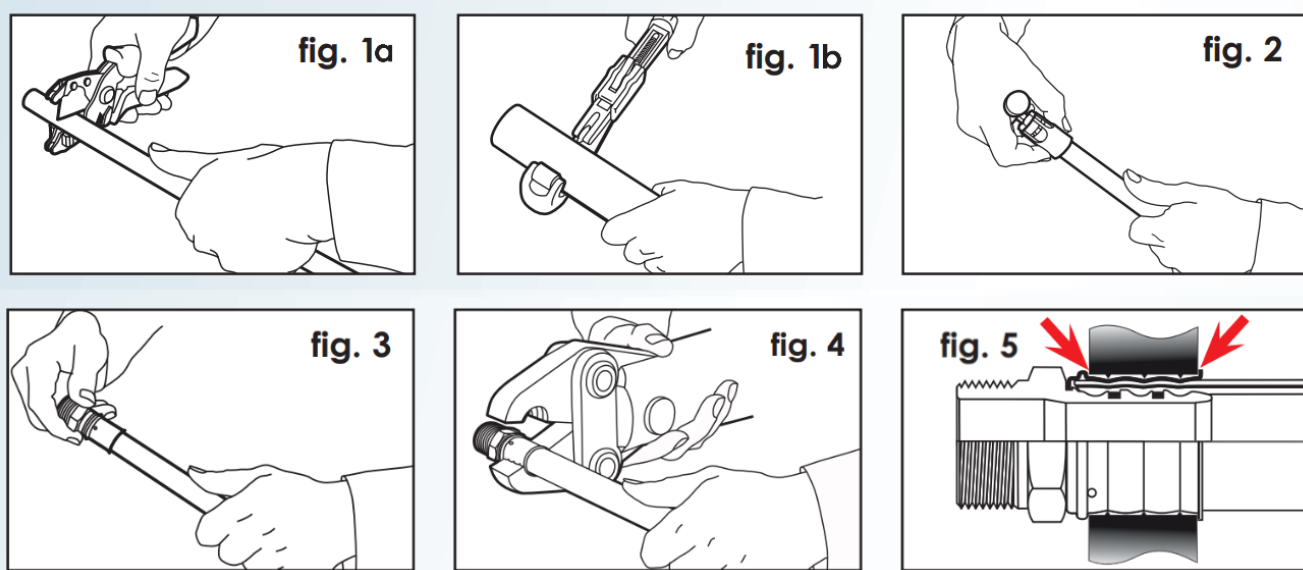
Fitting Body	Tin Plated Brass
Press collar	Double flange Stainless steel collar
O-ring	Double EPDM rubber O-ring
Approvals	WRAS,DVGW,KIWA
Sizes	16-25mm
Thickness	9mm or 13mm



### Product Information:

Multipipe's wall plate elbow offers an alternative way of neat termination for taps. Designed to be wall mounted, this can be placed in-wall or on-wall and can even be used with an angled valve which give a tidy way for isolation of the tap. Available with 1/2" to 3/4" female connectors.

### Installation:



### Product Dimensions

Part Code	Description	Dimensions	Weight (KG)
11-29010	Tap connection elbow wall mounted.	16x1/2"	0.113
11-29030	Tap connection elbow wall mounted.	20x1/2"	0.154
11-29031	Tap connection elbow wall mounted.	20x3/4"	0.179
11-29040	Tap connection elbow wall mounted.	25x3/4"	0.248