

MULTIPIPE

Altis Flow Under Floor Heating

Technical Data Sheet

Product Detail

Multipipe Altis Flow panel for use with 12mm pipework That bonds directly to the existing subfloor*. This provides a low height, high heat output system. We recommend on top of the system an 18mm covering of fibre reinforced levelling compound (2-3mm coverage from the top of the panel), giving a fully encapsulated system, ideal for use with low-temperature heat source systems.

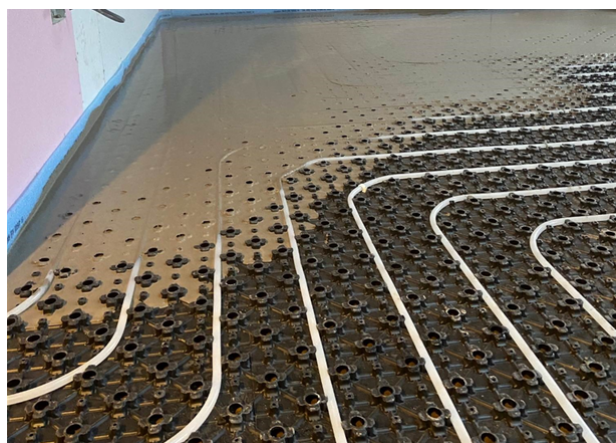
*We recommend that the existing slab is insulated for efficiency but will not affect system performance.

Benefits

- Allows for pipe laying in Bifilar and Meander
- variable pipe centres can be used
- easy to cut panel for customisation
- only 18mm build height
- great thermal output at low temperature.

Features

- overlap panel design to ensure easy pipe application
- strong self-bonding panel (no need for adhesives)
- strong panel ensure you can walk over with ease
- compatible with 12mm pipe



Underfloor Heating

Product Code (panel only)	11-40025
Panel Dimension (incl. Overlap)	1050x650 mm
Useable Area per Board	0.6m ²
Panel Height	16mm
Pipe Diameter	12mm
Pipe Spacing	50,100,150mm
System Height (minimum)	18mm
Panel Material	Panel: Polystyrene Foil: LDPE
System weight inc. 18mm coverage : (inc. pipe + water excl. floor covering)	45kg/m ²

Supplementary Products

