

MULTIPIPE

MLC fitting solutions guide

Multipipe MLC is the perfect pipe solution for most domestic and commercial projects. We offer an extensive range of tees, elbows and other connections. Of course, connections back to boilers and other appliances are always required which is where our adapters to copper come in handy. This useful guide will help you connect your devices easily and efficiently.



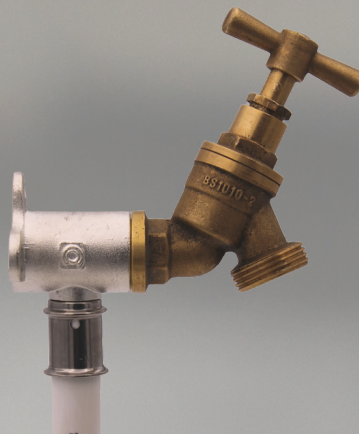
Tap connection

There are various ways to connect to a tap, but it often comes down to the thread on the fixture. Below we have given the most popular ways to connect.



Union connection

Union connections are great for fixed appliance threads as they can easily be broken out.



Wall elbow

Ideal for outdoor taps and flexible hoses.



Copper nut and insert

Universal nut and insert to connect to any copper compression thread. Ideal for IV's and compression taps.

Tap Connector & Breakdown Swivel Connector

Detachable fitting for surface mounted connections of filters, valves or taps. Supplied with fibre washer.

Part No.	Description	Bag	Box
11-28011	16 x 1/2" FT	10	200
11-28010	16 x 3/4" FT	10	200
11-28031	20 x 1/2" FT	10	200
11-28030	20 x 3/4" FT	10	200
11-28041	25 x 3/4" FT	10	100



Metal Press Backplate Elbow Female Thread (FT)

Part No.	Description	Bag	Box
11-29010	16 x 1/2" FT	10	100
11-29030	20 x 1/2" FT	10	100
11-29031	20 x 3/4" FT	10	100
11-29040	25 x 3/4" FT	10	80



ADAPTERS TO COPPER

Type 1 Adapter - Nut & Insert Adapter - 3 Piece

Nut and insert compression adapter for MLCp. Used to adapt to copper compression and radiator valves etc. NOTE: threads must be checked.

Part No.	Description (mm)	Bag	Box
34-13813G	12 x 15 Cu Nickel-plated	10	200
12-79710	16 x 15 Cu Nickel-plated	10	200



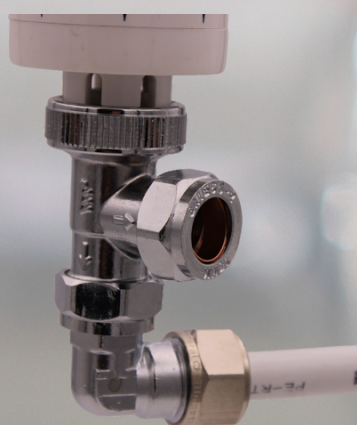
Radiator connection

If you require the MLC pipe to come up to the valve, you will need to consider different fittings.



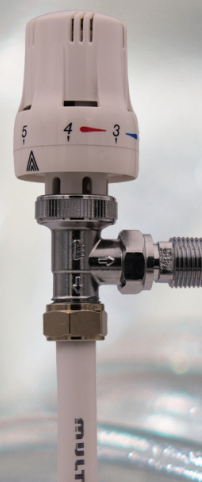
Long spigot elbow

This long press-fit elbow is excellent if you want metal pipe to the valve. Offered in both Chrome and Copper.



Short elbow

Ideal for wall entry pipes, use with copper nut and insert (see right) for any copper compression thread ideal correct pipe size.



Copper nut and insert

Universal nut and insert to connect to any copper compression thread ideal direct TRV connection.

Bare Copper

Type 3 Adapter - Metal Press to Copper Bent Spigot Adapter

Press-fit to copper 90°C elbow spigot adapter. For copper press or compression - Do Not Solder.

Part No.	Description (mm)	Bag
12-F23509	16 x 15 copper 150mm long	1



Chromed Radiator Compression Elbow

Elbow with 15mm spigot for connecting MLCP to radiators using 12mm (34-13813) and 16mm (12-79710) compression adapters.

Part No.	Description (mm)	Bag
12-15015	1/2" Male iron x 15 Diameter Spigot x 16mm long	10



ADAPTERS TO COPPER

Type 1 Adapter - Nut & Insert Adapter - 3 Piece

Nut and insert compression adapter for MLCP. Used to adapt to copper compression and radiator valves etc. NOTE: threads must be checked.

Part No.	Description (mm)	Bag	Box
34-13813G	12 x 15 Cu Nickel-plated	10	200
12-79710	16 x 15 Cu Nickel-plated	10	200



Chromed Copper

Metal Press Radiator Connection Elbow

Tin-plated copper 16x15mm press-fit 90° elbow for radiator connection. Sold individually.

Part No.	Description (mm)	Box
11-23509	16 x Cu 15mm - 150mm long	60
11-23510	16 x Cu 15mm - 330 mm long	60



Copper Pipe Connections

Sometimes you may need to reconnect to copper pipework. We offer a massive range of transition fittings for this purpose.



Long spigot elbow

This long press-fit elbow is excellent if you want metal pipe to the valve. Offered in both Chrome and Copper.



Compression coupler

A direct copper compression coupler ideal if you have no tooling



Copper nut and insert

Universal nut and insert to connect to any copper compression thread ideal direct TRV connection.

Type 3 Adapter - Metal Press to Copper Bent Spigot Adapter

Press-fit to copper 90°C elbow spigot adapter. For copper press or compression - Do Not Solder.

Part No.	Description (mm)	Bag
12-F23509	16 x 15 copper 150mm long	1



Type 2 - MLCP Compression to Copper Compression Couplings

Compression Straight Coupling Multilayer pipe to copper pipe. 16mm and 22mm.

Part No.	Description (mm)	Bag	Box
12-16151	16 x 15 Cu Brass finish	10	80
15-20152	20 x 15 Cu Nickel finish	10	80



Type 1 Adapter - Nut & Insert Adapter - 3 Piece

Nut and insert compression adapter for MLCP. Used to adapt to copper compression and radiator valves etc. NOTE: threads must be checked.

Part No.	Description (mm)	Bag	Box
34-13813G	12 x 15 Cu Nickel-plated	10	200
12-79710	16 x 15 Cu Nickel-plated	10	200



Spigot adapter

Fitted with a 35mm stub of copper this allows for use of press, push and compression fittings.



Press to compression adapter

This fitting can be pressed in place leaving a copper compression connector limit fittings used.



Type 3 Adapter - Metal Press to Copper Spigot Adapter

Press-fit to copper spigot adapter. For copper press or compression - DO NOT SOLDER.

Part No.	Description (mm)	Bag	Box
11-F29710	16 x 15	10	200
11-F29731	20 x 22	10	100
11-F29740	25 x 22	10	100
11-F29750	32 x 28	10	50



Type 4 Adapter - Metal Press to Copper Compression Adapter

Press-fit to copper compression adapter.

Part No.	Description (mm)	Bag	Box
11-F20710	16 x 15 Cu Straight	10	200
11-F20731	20 x 22 Cu Straight	10	100
11-F20740	25 x 22 Cu Straight	10	100

